

# The face-sensitive N170 encodes social category information

Jonathan B. Freeman<sup>a</sup>, Nalini Ambady<sup>a</sup> and Phillip J. Holcomb<sup>a</sup>

**Prominent models of face perception posit that the encoding of social categories begins after initial structural encoding has completed. In contrast, we hypothesized that social category encoding may occur simultaneously with structural encoding. While event-related potentials were recorded, participants categorized the sex of sex-typical and sex-atypical faces (containing more/less sex-category content). Results indicated that the face-sensitive right N170, a component involved in structural encoding, was larger for sex-typical relative to sex-atypical faces. Moreover, its amplitude predicted the efficiency of sex-category judgments. The right P1 component also peaked earlier for sex-typical faces. These findings demonstrate that structural encoding and social category encoding operate in parallel, suggesting that they may be accomplished by one single dynamic process rather than two separate mechanisms. *NeuroReport*.**

**NeuroReport** 2009, 00:000–000

**Keywords:** N170, face perception, social categorization, visual encoding, person perception, P1

<sup>a</sup>Department of Psychology, Tufts University, Medford, MA, U.S.A.

Correspondence to Jonathan B. Freeman, Department of Psychology, Tufts University, 490 Boston Avenue, Medford, MA 02155, U.S.A.

e-mail: jon.freeman@tufts.edu

Received 24 July 2009 accepted 18 August 2009

## Introduction

People readily and rapidly glean a variety of information from the faces of others [1]. The perception of three categories in particular—sex, race, and age—have long been described to be obligatory. The encoding of these categories is important because, once perceived, they trigger a variety of cognitive, affective, and behavioral consequences that shape our everyday interactions with others [1].

For decades, face perception research has been largely guided by the cognitive architecture outlined by Bruce and Young [2]. This model assumes that a structural encoding mechanism initially constructs a representation of the face's features and configuration. Processing results from structural encoding are then sent down two functionally-independent pathways. One pathway works to identify the target via recognition mechanisms while another pathway works on processing facial expression, speech, and other “visually derived semantic information,” such as social categories.

Various aspects of this model have been supported by neural evidence. For instance, electrophysiological studies have pinpointed a negative event-related potential (ERP) component peaking between 150–190 ms that is highly sensitive to faces (the N170), distributed maximally over occipito-temporal cortex. Much research

implicates the N170 in initial structural face encoding [3,4], but finds that it is insensitive to facial identity and familiarity [5]—a dissociation predicted by Bruce and Young's model [2]. Surprisingly little is known, however, about the neural encoding of social category information. The assumption is that this information is encoded only after representations from structural encoding have been built, and via a separate mechanism: the “directed-visual encoding” module [2]. Thus, social category encoding should presumably take place subsequent to the N170 and be reflected by a qualitatively different process.

There are several reasons why we believe this assumption may not be warranted. Single-unit recordings in the macaque show that the transient response of face-sensitive neurons in temporal cortex initially reflects a rough, global discrimination of a visual stimulus as a face (rather than some other object or shape). Subsequent firing of this *same* neuronal population, however, appears to gradually sharpen over time by coming to represent finer facial information, including identity and emotional expression [6]. This initial rough distinction between face and non-face stimuli in macaque temporal cortex likely corresponds with the early face-detection mechanism in humans peaking approximately 100 ms after face presentation [7], which is approximately 70 ms prior to the structural encoding operations reflected by the N170

[3-5]. That the same neuronal population gradually transitions from processing global characteristics (e.g., face versus non-face) into more complex information such as identity and expression is consistent with other evidence showing that representations in face-responsive neurons continuously sharpen across processing [8]. These findings open up the possibility that initial structural face encoding (indexed by the N170) and the encoding of finer, more complex information, such as social category cues, may actually be accomplished by one single temporally-dynamic process [9-11], rather than two functionally-independent modules working in stages, as classically theorized [2]. This single dynamic process would accumulate structural information and social category information in parallel, rather than sequential stages. Such parallel encoding is consistent with recent accounts of face perception, which posit that multiple codes (e.g., sex, race, identity, expression) are extracted simultaneously in a common multidimensional face-coding system. In this system, the dissociation between codes emerges not from separate neural modules [2], but rather from statistical regularities inherent in the visual input itself, which are processed in parallel [11].

A previous study found that the N170 was modulated by a face's race, with enlarged left N170s in response to White, relative to Black, faces [12]. This study and another recent study [13] found no differential N170 responses to male versus female faces, however. While these studies are valuable for understanding how the N170 responds to differences in low-level physical features, they are less valuable for understanding the N170's role in social category encoding [see 14]. That is, larger N170 effects in response to White versus Black faces could reflect visual differences intrinsic in the stimuli (e.g., skin tone and other race-specifying features)—not true encoding of race-category information. If N170 modulation had been found for male versus female faces, this also would have reflected low-level physical properties in the stimuli (e.g., the coloring of male versus female faces). Such physical confounds could easily influence the N170 or a temporally overlapping component [14].

In the present study, we use a facial morphing technique to isolate sexually-dimorphic content [the visual information that cues perceptions of sex-category; 15] and unconfound all other physical information. ERPs involved in encoding sex-category should be sensitive to the amount of sex-category content facially depicted. Regardless of whether faces are male or female, those with more sex-category content should receive more sex-category processing. If the N170 indexes this processing, this would suggest that social category encoding can take place alongside initial structural face encoding.

## Methods

### Participants

Participants were 23 healthy, right-handed volunteers that participated in exchange for \$20.

### Stimuli

To conduct morphing along sex, we used 3-D face modeling software, FaceGen Modeler 3.1, enabling the semi-randomized generation of face stimuli with a high level of realism. This permitted manipulation of gendered face content while keeping all other perceptual information constant. Fifty unique male faces were generated at the anthropometric male mean and 50 unique female faces were generated at the anthropometric female mean, together composing the typical condition. Each typical face was then morphed to be approximately 25% less gendered (more androgynous), composing the atypical condition. Faces were directly oriented and cropped as to preserve only the internal face (see Figure 1A for sample stimuli). This morphing technique also allowed us to control for low-level visual differences (e.g., brightness, intensity). For instance, males are darker than females, which was reflected in our morphing algorithm [16]. Therefore, when a male face was made atypical, it became lighter; when a female face was made atypical, it became darker. Because the typical and atypical conditions each contained male and female faces, such opposing effects cancelled each other out. As such, the typical/atypical conditions were tightly controlled against extraneous low-level visual-evoked responses.

### Behavioral procedure

Each of the 200 face stimuli were presented once in one of four randomized orders on a black background using a computer monitor directly in front of participants. Participants were instructed to categorize faces by sex as quickly and accurately as possible using left versus right hand button presses (whether male/female was left/right was counterbalanced). Participants were also told to avoid blinking during the trial and to only blink when a message appeared instructing them to. At the beginning of each trial, a fixation cross was presented for 800 ms, followed by a 500 ms inter-stimulus-interval (ISI) of a blank screen. Next, the face appeared for 600 ms, followed by a 1000 ms ISI. Finally, a message informing participants to blink appeared for 2000 ms. After a 300 ms ISI, the next trial began. Participants completed several practice trials prior to experimental trials.

### Electrophysiological recording and analysis

Participants were seated in a comfortable chair in a sound attenuated darkened room. An electro-cap with tin electrodes was used to record continuous EEG from 29 sites on the scalp including sites over left and right

fronto-polar (FP1/FP2), frontal (F3/F4, F7/F8), fronto-central (FC1/FC2, FC5/FC6), central (C3/C4), temporal (T5/T6, T3/T4), central-parietal (CP1/CP2, CP5/CP6), parietal (P3/P4), and occipital (O1/O2) areas and five midline sites over the frontal pole (FPz), frontal (Fz), central (Cz), parietal (Pz) and occipital (Oz) areas. In addition, five electrodes were attached to the face and neck area: one below the left eye (to monitor for vertical eye movement and blinks), one to the right of the right eye (to monitor horizontal eye movements), one over the left and right mastoids, and one on the nose (reference). All EEG electrode impedances were maintained below 5 k $\Omega$  for scalp electrodes, 10 k $\Omega$  for eye and nose electrodes, and 2 k $\Omega$  for mastoid electrodes. The EEG was amplified by an SA Bioamplifier with a bandpass of 0.01 and 40 Hz and the EEG was continuously sampled at a rate of 250 Hz. Averaged ERPs were calculated off-line from trials free of ocular and muscular artifact using an automatic detection algorithm (all trials were rejected in which either the difference in activity between electrodes directly below and above the left eye or the activity of an electrode directly to the right of the right eye exceeded 50  $\mu$ V. The overall rejection rate was 17%. ERPs were generated by time-locking to the onset of face stimuli and calculated relative to a 100 ms prestimulus baseline.

## Results

### Behavioral data

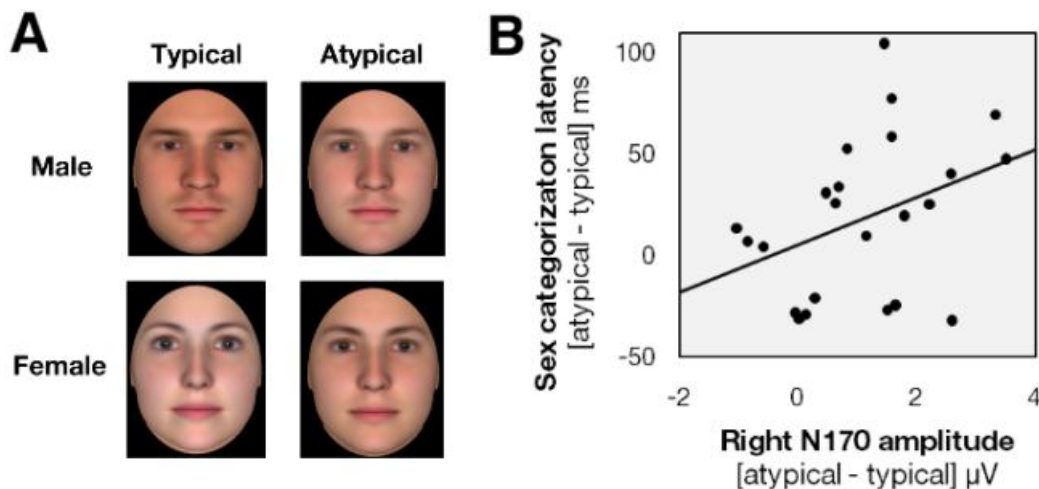
Participants made less categorization errors for typical targets ( $M = 3.3\%$ ) than atypical targets ( $M = 5.0\%$ ), and

this difference was marginally significant,  $t(22) = 1.75$ ,  $p = .09$ . These incorrect trials were discarded from analysis. Expectedly, participants were also significantly quicker to categorize the sex of typical targets ( $M = 573$  ms) than atypical targets ( $M = 592$  ms),  $t(22) = 2.61$ ,  $p < .05$ .

### Event-related potential data

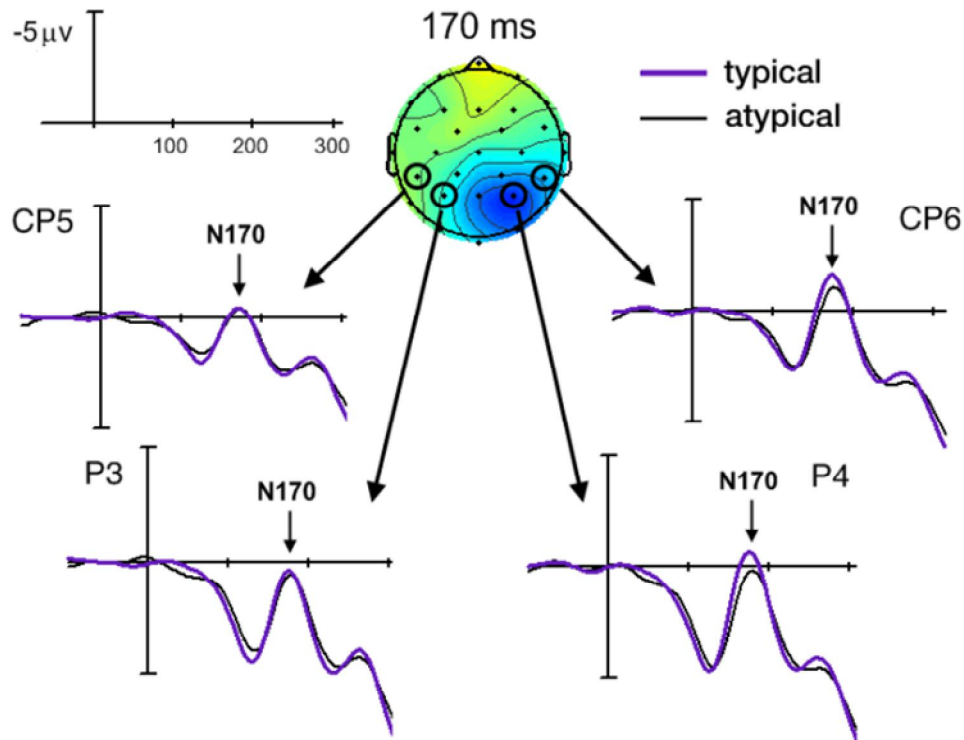
Given an *a priori* hypothesis of N170 involvement in social category encoding and its localization to occipito-temporal sites [3-5], we measured mean amplitudes between a post-stimulus window of 150-190 ms that were averaged together for left occipito-temporal sites (CP5/P3) and together for right occipito-temporal sites (CP6/P4). The N170 in the left hemisphere did not reliably differ for sex-typical ( $M = 0.97$   $\mu$ V) versus sex-atypical ( $M = 1.09$   $\mu$ V) faces,  $t(22) = 0.29$ ,  $p = .78$ . The N170 in the right hemisphere, however, was significantly enlarged for sex-typical ( $M = -0.81$   $\mu$ V) relative to sex-atypical faces ( $M = 0.21$   $\mu$ V),  $t(22) = 8.25$ ,  $p < .000001$ . Figure 2 depicts the grand-average waveforms for sex-typical and sex-atypical faces along with a voltage map representing the difference in ERPs between sex-typical and sex-atypical faces. Voltage maps representing separate grand-average ERPs for sex-typical and sex-atypical faces appear in Figure 3, which show a canonical N170 topography, as reported in prior face perception studies [3-5]. Peak latencies did not differ between sex-typical and sex-atypical faces in this time window [left:  $t(22) = 0.76$ ,  $p = .45$ ; right:  $t(22) < 0.01$ ,  $p > .99$ ].

Fig. 1



(A) Sample stimuli. (B) Difference score [atypical – typical] of each participant's sex-categorization latencies as a function of each participant's difference score [atypical – typical] of their N170 amplitude. The more enlarged the N170 was for sex-typical (relative to sex-atypical) faces, the more efficient those faces were sex-categorized (relative to sex-atypical faces).

Fig. 2



Grand-average waveforms for typical and atypical faces at left and right occipito-temporal sites. Negative is plotted up. Also depicted is a voltage map showing normalized difference waves [typical – atypical] at 170 ms. Blue coloring indicates higher negativity for typical faces.

If the N170's enlargement for sex-typical faces truly reflects encoding of sex-category content, its amplitude should be associated with sex-categorization latencies, as encoding should facilitate categorization. Specifically, more enlarged N170s in response to sex-typical (relative to sex-atypical) faces should be accompanied by faster categorizations of sex-typical (relative to sex-atypical) faces. For each participant, difference scores [atypical – typical] for right N170 amplitudes (at P4 site) and for response latencies were calculated. As predicted, more enlarged N170s for sex-typical (relative to sex-atypical) faces were associated with more efficient sex-categorizations for sex-typical (relative to sex-atypical) faces,  $r(21) = .37$ ,  $p < .05$  (one-tailed for directional hypothesis), as shown in Figure 1B.

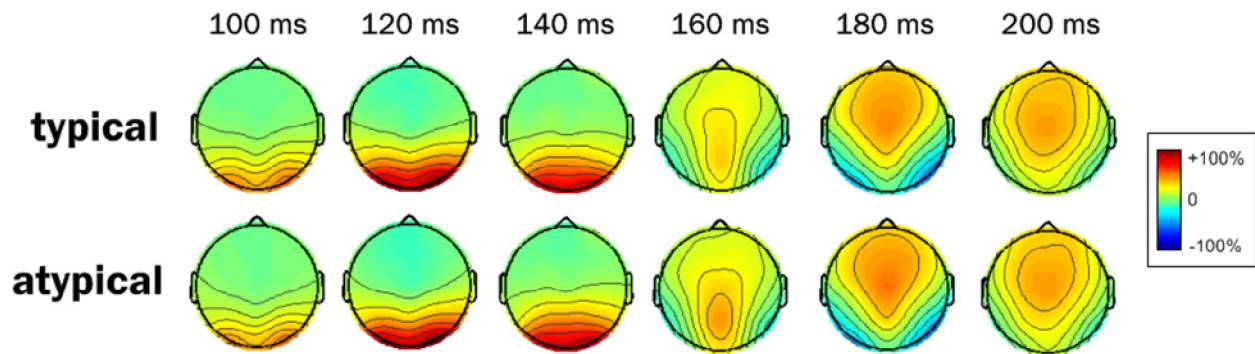
We also explored whether the earlier P1 component was modulated by sex-typicality at occipito-temporal sites. Beyond its established role in low-level visuoperceptual processing, the P1 has recently been shown to play a role in global configural processing of the face, as its latency is modulated by configural transformations such as face inversion [17]. If social category encoding runs parallel with the extraction of lower-level face information, as we argue, it is possible that the P1 may also be sensitive to

sex-typicality. Mean amplitudes and peak latencies between a poststimulus window of 100–140 ms were averaged together for left occipito-temporal sites (CP5/P3) and together for right occipito-temporal sites (CP6/P4). In the left hemisphere, P1 amplitude was not modulated by sex-typicality [ $t(22) = 1.00$ ,  $p = .33$ ] nor was P1 latency [ $t(22) = 1.41$ ,  $p = .17$ ]. In the right hemisphere, P1 amplitude was also not modulated by sex-typicality [ $t(22) = 0.93$ ,  $p = .36$ ]. However, the P1 of the right hemisphere did peak earlier for typical faces ( $M = 118$  ms) relative to atypical faces ( $M = 126$  ms),  $t(22) = 2.40$ ,  $p < .05$ .

## Discussion

The right N170 was enlarged for faces containing more, relative to less, sex-category content and its amplitude predicted sex-categorization efficiency. These results suggest that, beyond the N170's established role in structural encoding [4], it is also involved in encoding social category information. That social category processing spatially and temporally coincided with an index of early structural encoding (the N170) implies that processing from initial structural encoding does not feed-

Fig. 3



Voltage maps showing normalized grand-average ERP waves separately for typical and atypical targets. Note the canonical P1 (positivity effect between 100-140 ms) and N170 (negativity effect between 160-200 ms) topographies in bilateral occipito-temporal cortex across both conditions, but that the N170 is slightly stronger in the typical condition (but only in the right hemisphere).

forward to a subsequent social category encoding mechanism, as classically outlined by the Bruce and Young model [2]. Rather, the encoding of social categories may begin in parallel with structural encoding. These results suggest the possibility that structural encoding and social category encoding may be performed by one single dynamic process [9-11] rather than two separate mechanisms. This would be consistent with the perspective that the face perceptual system is structured in a common multidimensional face-space, in which various aspects of the face could be encoded simultaneously [e.g., 11,18].

In addition to the right N170, the right occipito-temporal P1 peaked earlier for sex-typical relative to sex-atypical faces. This agrees with recent work finding modulation of right P1 latency by configural face transformations [e.g., 17]. That sex-category processing was reflected in the earlier right P1 as well, a component thought to play a role in global configural face encoding [17], provides further support for the notion that social category encoding is part of a temporally-dynamic process, in which sex-category and lower-level face information would be extracted across time and in parallel [9-11], as described earlier.

That sex-category encoding was lateralized to the right hemisphere, despite overall N170 and P1 effects in both hemispheres (see Figures 2 and 3), agrees with a large body of neuroimaging and psychophysiological work finding that face processing tends to be right-lateralized [19]. The present results point to the importance of neural processing in right occipito-temporal cortex between 100-190 ms for extracting social category information from the face.

## Conclusion

In sum, we found that the right N170 and right P1 were sensitive to sex-category facial content and that N170 amplitude predicted the efficiency of sex-categorizations. This demonstrates that social category encoding and the extraction of lower-level face information operate in parallel, rather than sequential stages.

## Acknowledgements

This research was funded by a National Science Foundation research grant NSF (BCS-0435547) and NICHD (HD25889).

## References

- 1 Macrae CN, Bodenhausen GV. Social cognition: Thinking categorically about others. *Annu Rev Psychol* 2000; **51**: 93-120.
- 2 Bruce V, Young AW. A theoretical perspective for understanding face recognition. *Br J Psychol* 1986; **77**: 305-327.
- 3 Eimer M. Event-related brain potentials distinguish processing stages involved in face perception and recognition. *Clin Neurophysiol* 2000; **111**: 694-705.
- 4 Sagiv N, Bentin S. Structural encoding of human and schematic faces: Holistic and part-based processes. *J Cogn Neurosci* 2001; **13**: 937-951.
- 5 Bentin S, Deouell LY. Structural encoding and identification in face processing: ERP evidence for separate mechanisms. *Cognitive Neuropsychology* 2000; **17**: 35-54.

- 6 Sugase Y, Yamane S, Ueno S, Kawano K. Global and fine information coded by single neurons in the temporal visual cortex. *Nature* 1999; **400**: 869-873.
- 7 Liu J, Harris A, Kanwisher N. Stages of processing in face perception: an MEG study. *Nat Neurosci* 2002; **5**: 910-916.
- 8 Rolls ET, Tovee MJ. Sparseness of the neuronal representation of stimuli in the primate temporal visual cortex. *J Neurophysiol* 1995; **73**.
- 9 Freeman JB, Ambady N, Rule NO, Johnson KL. Will a category cue attract you? Motor output reveals dynamic competition across person construal. *J Exp Psychol Gen* 2008; **137**: 673-690.
- 10 Valentin D, Abdi H, O'Toole AJ, Cottrell GW. Connectionist models of face processing: A survey. *Pattern Recognition* 1994; **27**: 1209-1230.
- 11 Calder AJ, Young AW. Understanding the recognition of facial identity and facial expression. *Nature Reviews Neuroscience* 2005; **6**: 641-651.
- 12 Ito TA, Urland GR. The influence of processing objectives on the perception of faces: An ERP study of race and gender perception. *Cognitive, Affective, and Behavioral Neuroscience* 2005; **5**: 21-36.
- 13 Mouchetant-Rostaing Y, Giard MH, Bentin S, Aguera P, Pernier J. Neurophysiological correlates of face gender processing in humans. *Eur J Neurosci* 2000; **12**: 303-310.
- 14 VanRullen R, Thorpe SJ. The time course of visual processing: From early perception to decision-making. *J Cogn Neurosci* 2001; **13**: 454-461.
- 15 Goshen-Gottstein Y, Ganel T. Repetition priming for familiar and unfamiliar faces in a sex-judgment task: Evidence for a common route for the processing of sex and identity. *Journal of Experimental Psychology: Learning, Memory, and Cognition* 2000; **26**: 1198-1214.
- 16 Blanz V, Vetter T. A morphable model for the synthesis of 3D faces. *SIGGRAPH'99*. Los Angeles; 1999. pp. 187-194.
- 17 Boutsen L, Humphreys GW, Praamstra P, Warbrick T. Comparing neural correlates of configural processing in faces and objects: An ERP study of the Thatcher illusion. *Neuroimage* 2006; **32**: 352-367.
- 18 Tanaka J, Giles M, Kremen S, Simon V. Mapping attractor fields in face space: the atypicality bias in face recognition. *Cognition* 1998; **68**: 199-220.
- 19 Mercure E, Dick F, Halit H, Kaufman J, Johnson MH. Differential lateralization for words and faces: Category or psychophysics? *J Cogn Neurosci* 2008; **20**: 2070-2087.